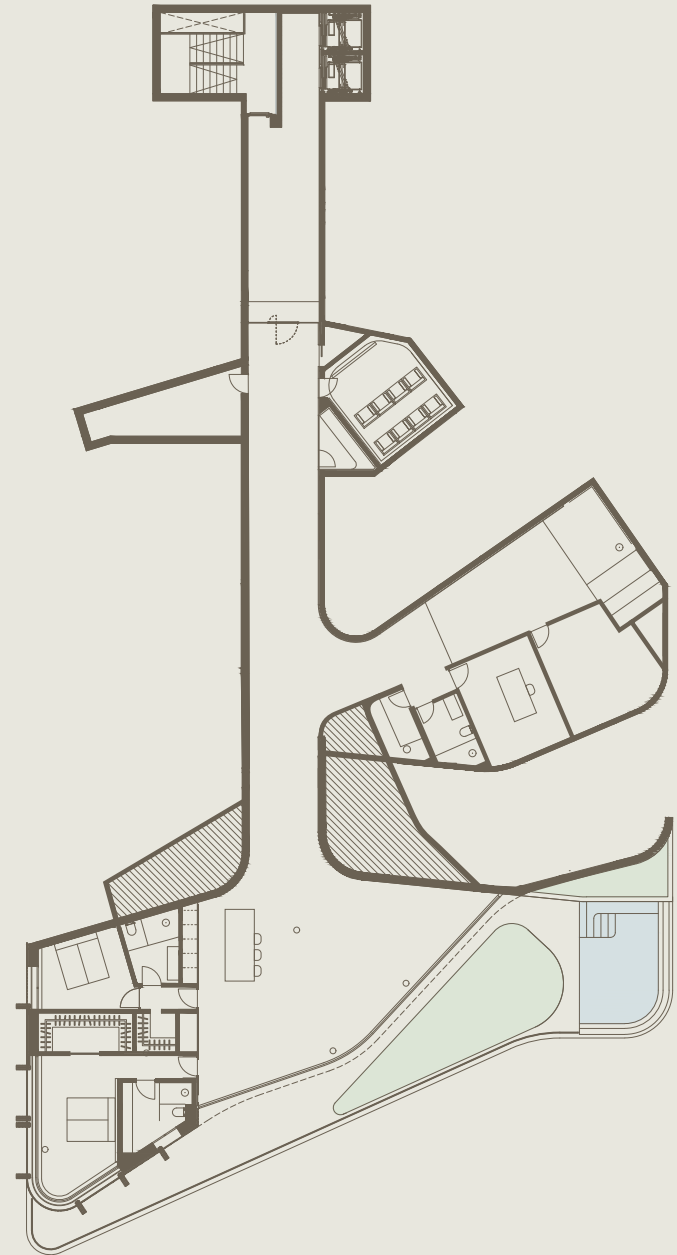
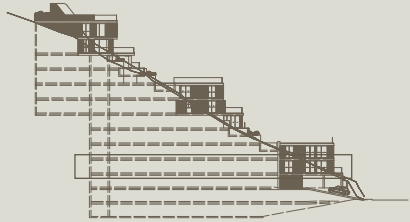


Hill 100

Facts

Hill	100	Pool	20
Level	1	Terrace/Garden	82
Beds	2	Total outdoor area	102
Baths	3	Total area	497
Extra room/Estancia	2	Storage	1
Indoor area	395	Parking	2

Placement



Disclaimer: Images are only indicative of the quality and style. Indoor area (ES: construido) follows Spanish standards, covering internal apartment area, including internal and external walls, 50% of boundary walls, and internal shafts. Measurements are approximate, and we may adjust the floor plan if needed. Scale: 1:350. For further information, feel free to contact us directly at info@andratxhills.com. Document version AHFP002. © Andratx Hills, all rights are reserved. Please contact for usages of content.

0 1 2 3 4 5 6 7 8 9 10 m

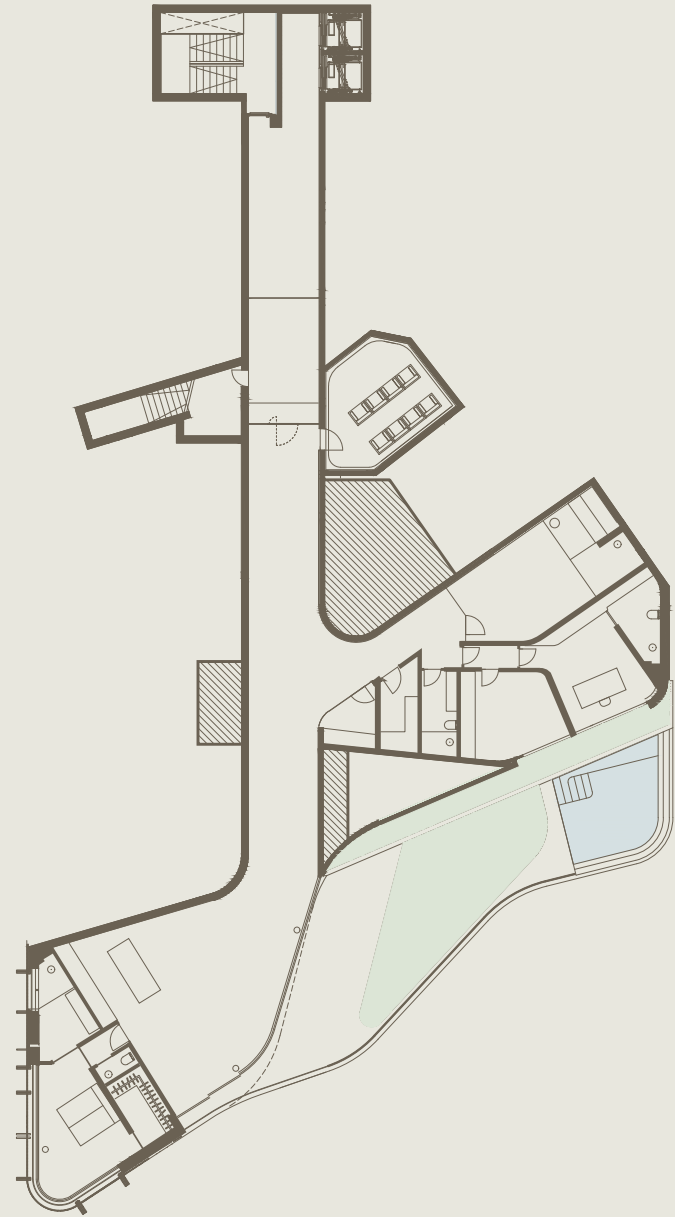
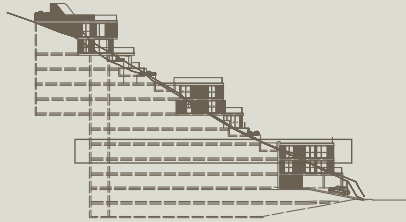


Hill 200

Facts

Hill	200	Pool	19
Level	2	Terrace/Garden	86
Beds	2	Total outdoor area	105
Baths	3	Total area	420
Extra room/Estancia	2	Storage	1
Indoor area	315	Parking	2

Placement



Disclaimer: Images are only indicative of the quality and style. Indoor area (ES: construido) follows Spanish standards, covering internal apartment area, including internal and external walls, 50% of boundary walls, and internal shafts. Measurements are approximate, and we may adjust the floor plan if needed. Scale: 1:350. For further information, feel free to contact us directly at info@andratxhills.com. Document version AHFP002. © Andratx Hills, all rights are reserved. Please contact for usages of content.

0 1 2 3 4 5 6 7 8 9 10 m

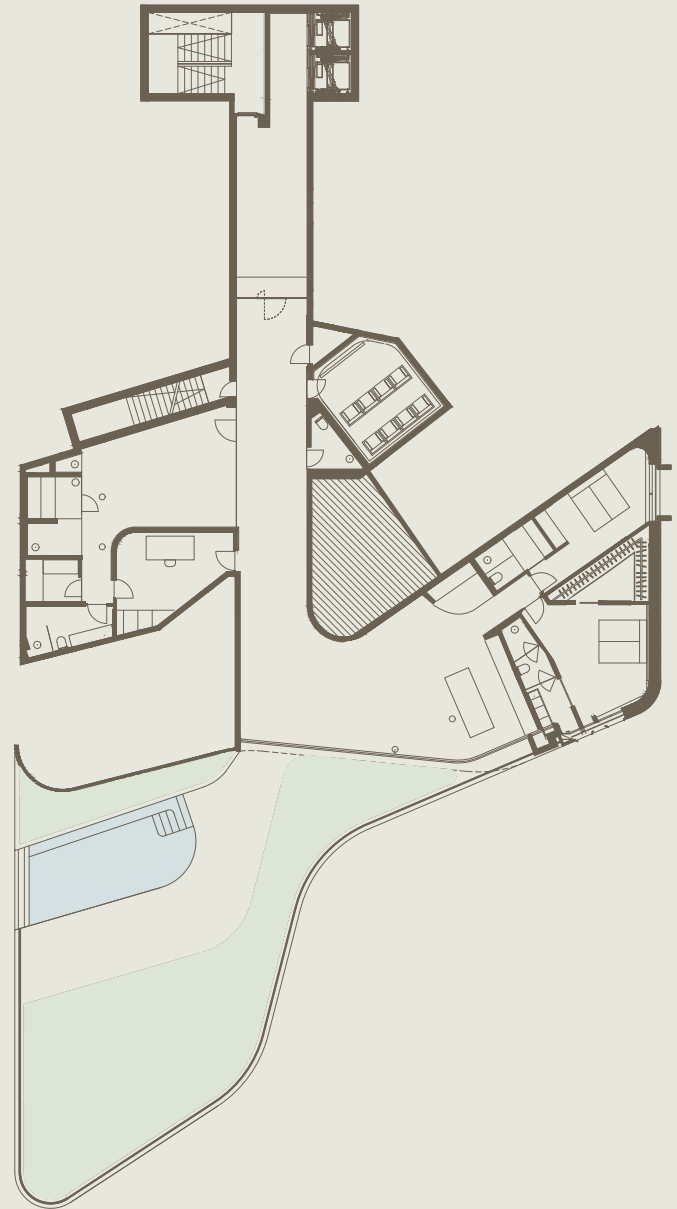
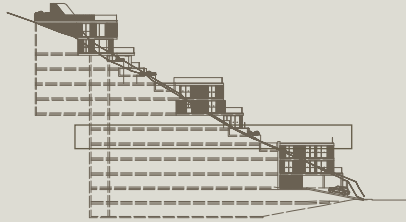


Hill 300

Facts

Hill	300	Pool	31
Level	3	Terrace/Garden	160
Beds	2	Total outdoor area	191
Baths	3	Total area	488
Extra room/Estancia	1	Storage	1
Indoor area	297	Parking	2

Placement



Disclaimer: Images are only indicative of the quality and style. Indoor area (ES: construido) follows Spanish standards, covering internal apartment area, including internal and external walls, 50% of boundary walls, and internal shafts. Measurements are approximate, and we may adjust the floor plan if needed. Scale: 1:350. For further information, feel free to contact us directly at info@andratxhills.com. Document version AHFP002. © Andratx Hills, all rights are reserved. Please contact for usages of content.

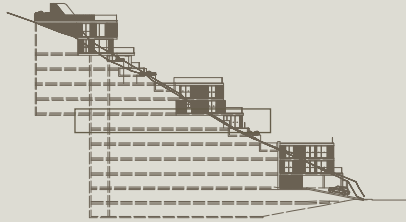


Hill 400

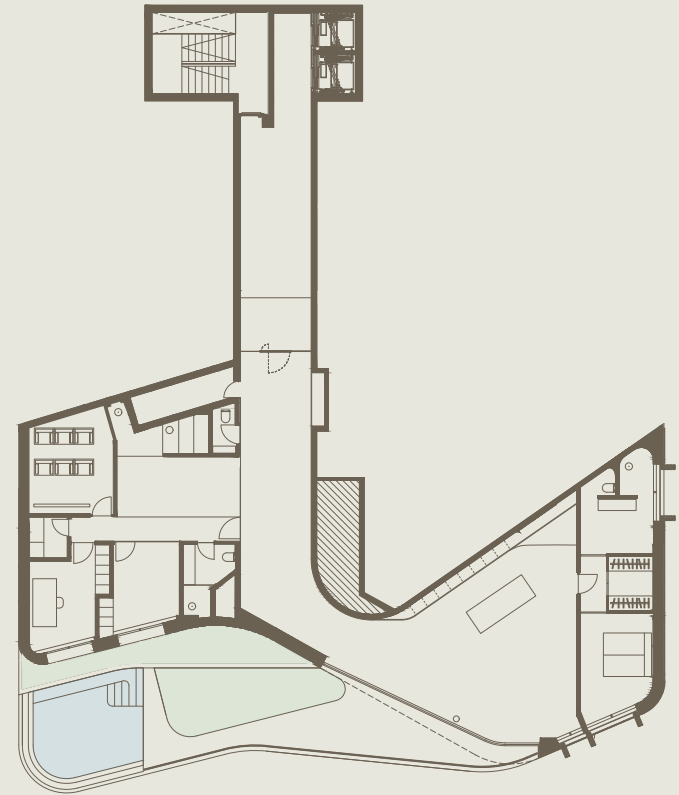
Facts

Hill	400	Pool	20
Level	4	Terrace/Garden	57
Beds	2	Total outdoor area	77
Baths	3	Total area	320
Extra room/Estancia	2	Storage	1
Indoor area	243	Parking	2

Placement



Disclaimer: Images are only indicative of the quality and style. Indoor area (ES: construido) follows Spanish standards, covering internal apartment area, including internal and external walls, 50% of boundary walls, and internal shafts. Measurements are approximate, and we may adjust the floor plan if needed. Scale: 1:350. For further information, feel free to contact us directly at info@andratxhills.com. Document version AHFP002. © Andratx Hills, all rights are reserved. Please contact for usages of content.



0 1 2 3 4 5 6 7 8 9 10 m

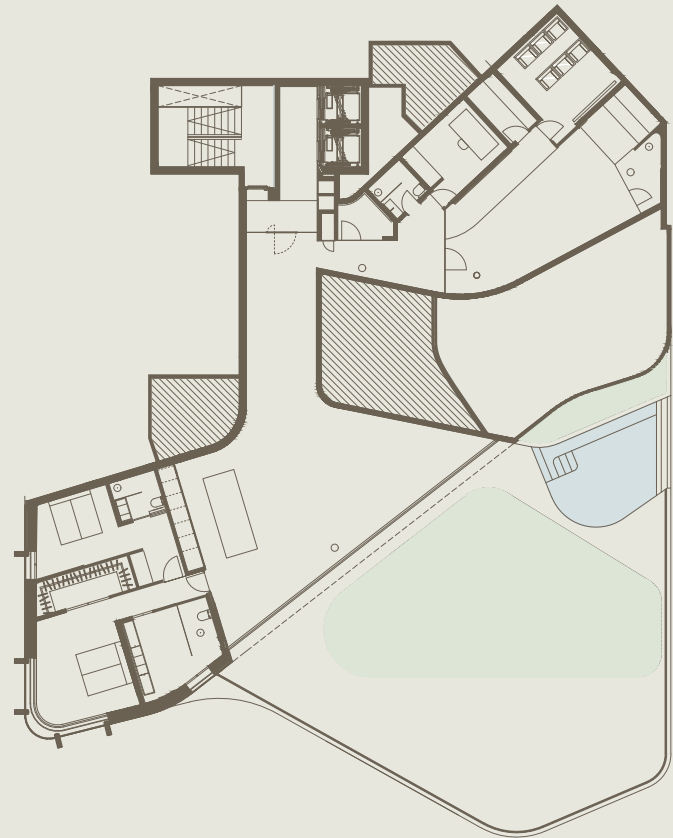
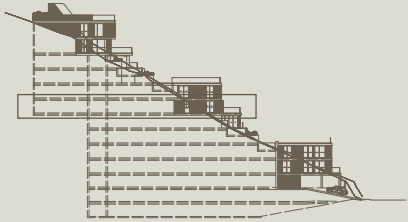


Hill 500

Facts

Hill	500	Pool	24
Level	5	Terrace/Garden	195
Beds	2	Total outdoor area	219
Baths	3	Total area	507
Extra room/Estancia	2	Storage	1
Indoor area	288	Parking	2

Placement



Disclaimer: Images are only indicative of the quality and style. Indoor area (ES: construido) follows Spanish standards, covering internal apartment area, including internal and external walls, 50% of boundary walls, and internal shafts. Measurements are approximate, and we may adjust the floor plan if needed. Scale: 1:350. For further information, feel free to contact us directly at info@andratxhills.com. Document version AHFP002. © Andratx Hills, all rights are reserved. Please contact for usages of content.

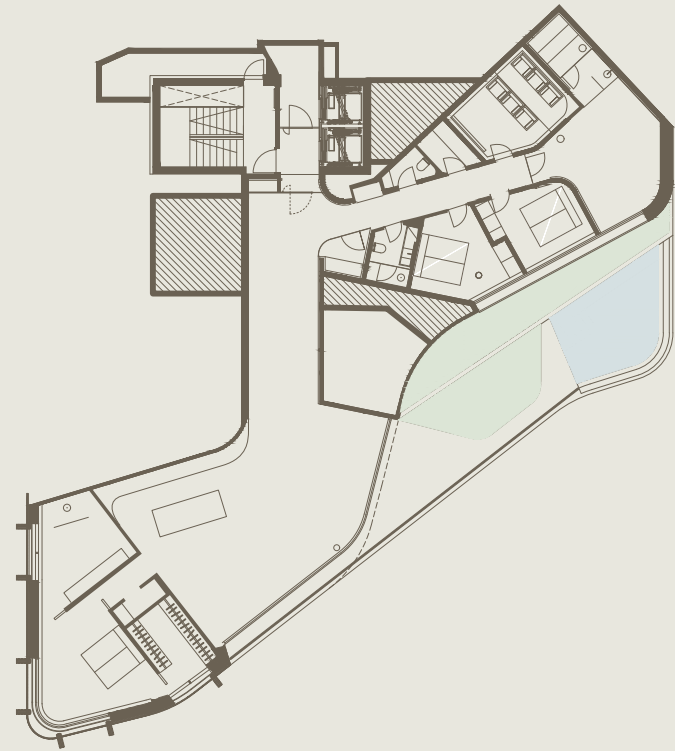
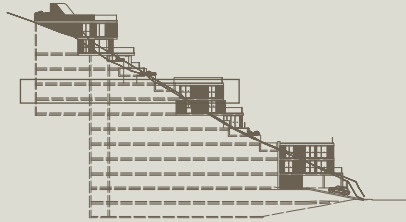


Hill 600

Facts

Hill	600	Pool	17
Level	6	Terrace/Garden	55
Beds	2	Total outdoor area	72
Baths	3	Total area	351
Extra room/Estancia	2	Storage	1
Indoor area	279	Parking	2

Placement



Disclaimer: Images are only indicative of the quality and style. Indoor area (ES: construido) follows Spanish standards, covering internal apartment area, including internal and external walls, 50% of boundary walls, and internal shafts. Measurements are approximate, and we may adjust the floor plan if needed. Scale: 1:350. For further information, feel free to contact us directly at info@andratxhills.com. Document version AHFP002. © Andratx Hills, all rights are reserved. Please contact for usages of content.

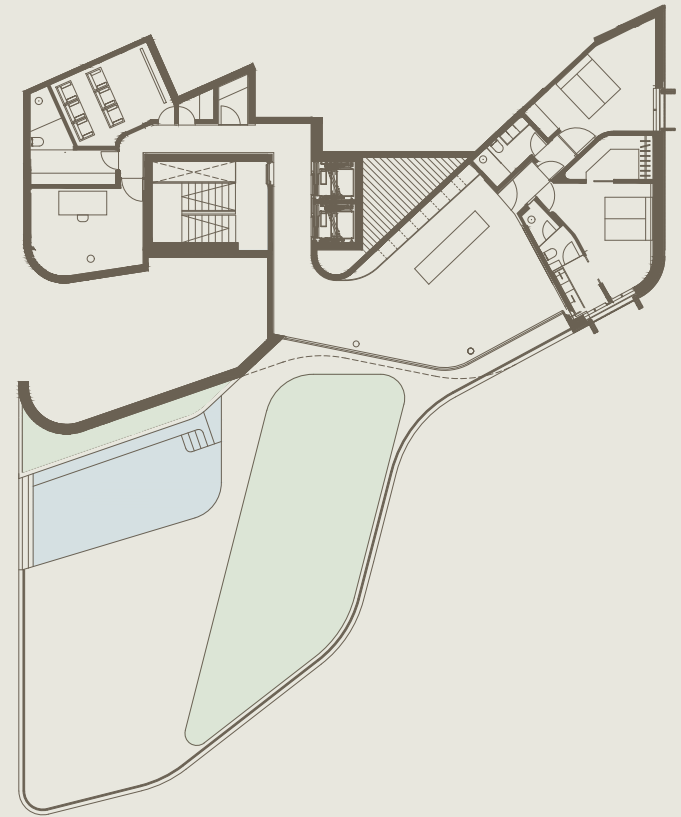
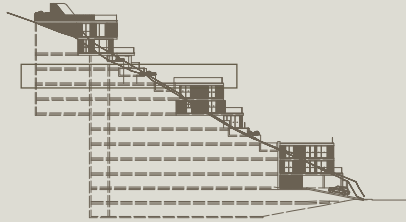


Hill 700

Facts

Hill	700	Pool	33
Level	7	Terrace/Garden	189
Beds	2	Total outdoor area	222
Baths	3	Total area	423
Extra room/Estancia	1	Storage	1
Indoor area	201	Parking	2

Placement



Disclaimer: Images are only indicative of the quality and style. Indoor area (ES: construido) follows Spanish standards, covering internal apartment area, including internal and external walls, 50% of boundary walls, and internal shafts. Measurements are approximate, and we may adjust the floor plan if needed. Scale: 1:350. For further information, feel free to contact us directly at info@andratxhills.com. Document version AHFP002. © Andratx Hills, all rights are reserved. Please contact for usages of content.

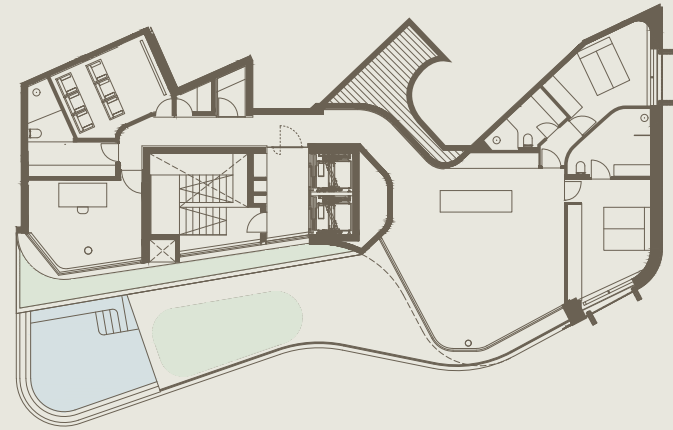
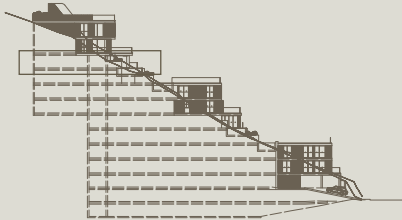


Hill 800

Facts

Hill	800	Pool	22
Level	8	Terrace/Garden	57
Beds	2	Total outdoor area	79
Baths	3	Total area	270
Extra room/Estancia	1	Storage	1
Indoor area	191	Parking	2

Placement



Disclaimer: Images are only indicative of the quality and style. Indoor area (ES: construido) follows Spanish standards, covering internal apartment area, including internal and external walls, 50% of boundary walls, and internal shafts. Measurements are approximate, and we may adjust the floor plan if needed. Scale: 1:350. For further information, feel free to contact us directly at info@andratxhills.com. Document version AHFP002. © Andratx Hills, all rights are reserved. Please contact for usages of content.

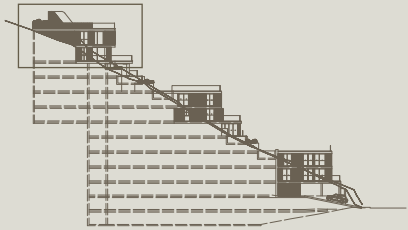


The Villa, F 9-11

Facts

Penthouse	The Villa	Pool	37+20
Level	6-11	Terrace/Garden	298
Beds	4	Total outdoor area	354
Baths	6	Total area	857
Extra room/Estancia	-	Storage	1
Indoor area	502	Parking	3

Placement



Disclaimer: Images are only indicative of the quality and style. Indoor area (ES: construido) follows Spanish standards, covering internal apartment area, including internal and external walls, 50% of boundary walls, and internal shafts. Measurements are approximate, and we may adjust the floor plan if needed. Scale: 1:350. For further information, feel free to contact us directly at info@andratxhills.com. Document version AHFP002. © Andratx Hills, all rights are reserved. Please contact for usages of content.

0 1 2 3 4 5 6 7 8 9 10 m



The Villa, F 6-8

The Villa at the summit is truly exceptional. It spans an impressive three floors dedicated to leisure and another three for living, resulting in a remarkable indoor space that exceeds 500 square meters. With the added convenience of a private elevator providing seamless access to all levels, including the terraces and pools, this residence redefines the standards of privacy, space, amenities, and outdoor living. It blends the opulence of a luxury villa with the practicality of an apartment, offering a unique and unparalleled lifestyle.

The Villa auf dem Gipfel ist wirklich außergewöhnlich. Sie erstreckt sich über beeindruckende drei Etagen, die der Freizeitgestaltung gewidmet sind, und drei weitere Etagen, die dem Wohnen dienen, was zu einer bemerkenswerten Innenfläche von über 500 Quadratmetern führt. Mit dem zusätzlichen Komfort eines privaten Aufzugs, der einen nahtlosen Zugang zu allen Ebenen einschließlich der Terrassen und Pools ermöglicht, setzt diese Residenz neue Maßstäbe für Privatsphäre, Raum, Komfort und Leben im Freien. Sie verbindet die Opulenz einer Luxusvilla mit der Zweckmäßigkeit eines Apartments und bietet einen einzigartigen und unvergleichlichen Lebensstil.



Disclaimer: Images are only indicative of the quality and style. Indoor area (ES: construido) follows Spanish standards, covering internal apartment area, including internal and external walls, 50% of boundary walls, and internal shafts. Measurements are approximate, and we may adjust the floor plan if needed. Scale: 1:350. For further information, feel free to contact us directly at info@andratxhills.com. Document version AHFP002. © Andratx Hills, all rights are reserved. Please contact for usages of content.

